



Front dimensions: Ø 25 mm  
Panel cut-out: Ø 16.2 mm  
Front bezel height: 7 mm  
Travel: 3 mm





# OKTRON-R

 Product configurator




## Overview OKTRON-R series





01 Pushbutton Heads	page 42	07 Key Actuators	page 48
02 Emergency Stop Buttons	page 44	08 Acoustic Buzzers	page 50
03 Mushroom Heads	page 45	09 Pilot Lights	page 52
04 Knob Set for Potentiometers	page 45		
05 Selector Heads	page 46	<b>Contact Blocks / Lampholders</b>	page 408
06 Toggle Heads	page 47		


## Housing Colours

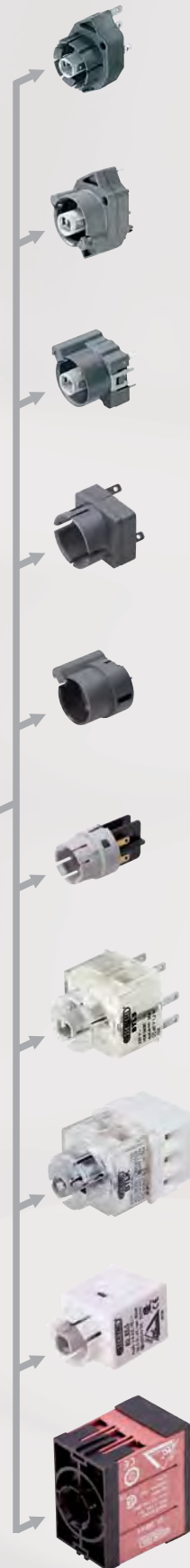
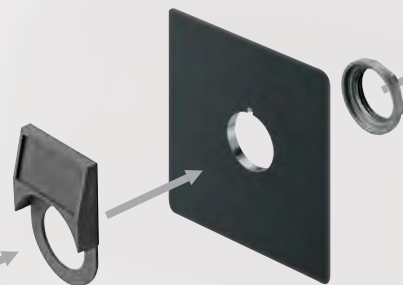


 IP65 degree of protection

 3 mm operating travel

 illuminating option

 labelling option



**CT**  
CT...  
Contact Blocks  
Faston terminals  
**page 490**

**CZ**  
CZ...  
Contact Blocks  
PCB-mount terminals  
**page 482**

**CTP**  
CTP...  
Contact Blocks  
PCB-mount terminals  
**page 468**

**CTF**  
CTF...  
Contact Blocks  
Faston terminals  
**page 474**

**PTP**  
PT...  
Contact Blocks  
PCB-mount terminals  
**page 496**

**PTF**  
PT...  
Contact Blocks  
Faston terminals  
**page 500**

**B**  
**BZ**  
B...  
Contact Blocks  
Faston terminals  
**page 428**

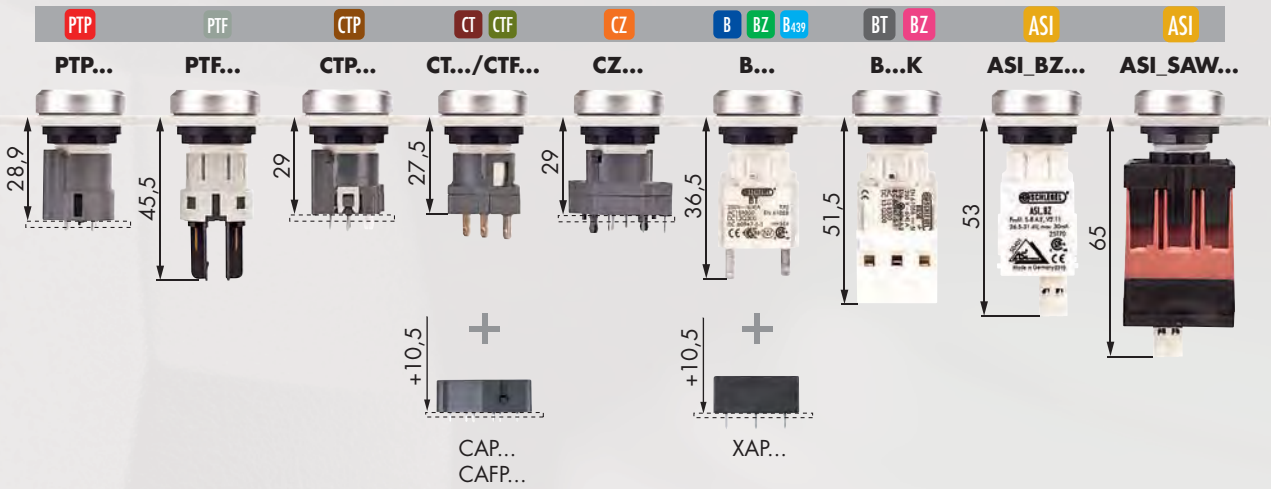
**BT**  
**BZ**  
B...  
Contact Blocks  
Screw connections  
**page 436**

**ASI**  
ASI...  
Contact Blocks  
for AS-Interface  
**page 534**

**ASI**  
ASI...  
Contact Blocks  
for AS-Interface  
Safety @ Work  
**page 540**

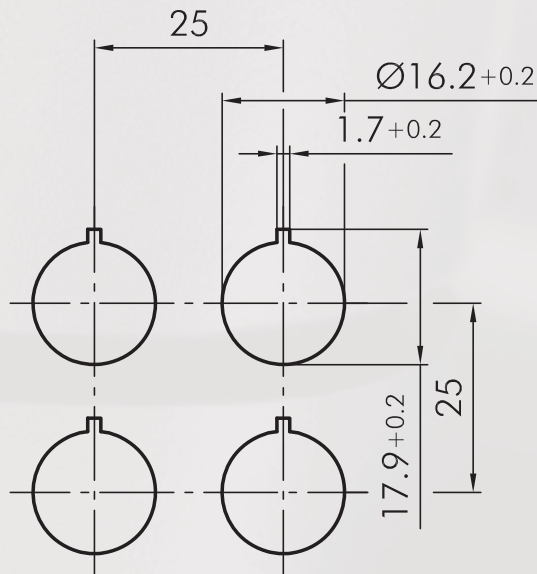


## Mounting Depth Dimensions

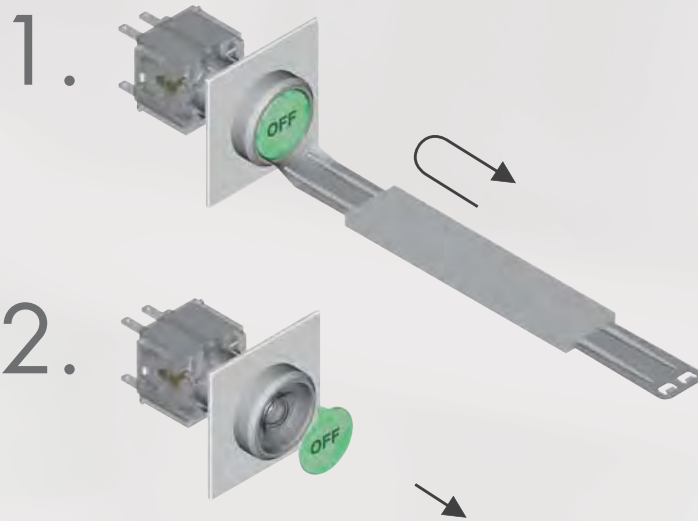


## Cutout Dimensions

Min. mounting grid 25 x 38 mm when using external nameplate holders



## Mounting and Service Instructions



## Pushbutton Heads

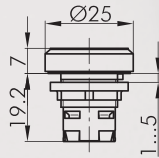
Lenses and nameplates to be ordered separately

Illustration

Dimensions

Description

Type



### Pushbutton Head

suitable contact blocks

**BUS ASI AZ B BF BZ BZ B39 CT CTF CTP CZ**

front bezel

charcoal

silver-coloured

**RKT**

**RKTM**

### Flat Lens, transparent

colour

blue

yellow

green

clear

red

opalwhite

**T20FBL**

**T20FGB**

**T20FGN**

**T20FKL**

**T20FRT**

**T20FWS**

### Flat Lens, non-transparent

used in pushbuttons without inscription and illumination

colour

blue

yellow

green

black

red

white

**T20FGBL**

**T20FGGB**

**T20FGGN**

**T20FGSW**

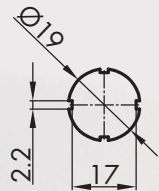
**T20FGRT**

**T20FGWS**

### Nameplate with standard imprint

Please specify index number (see nameplates on pages 404)

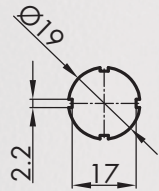
**BSRX...**



### Nameplate with special imprint

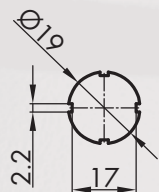
according to customer's specification

**BSRXB**



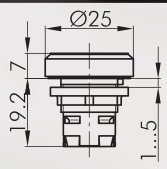

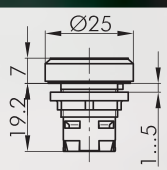

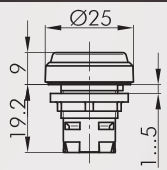

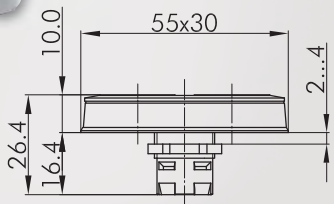

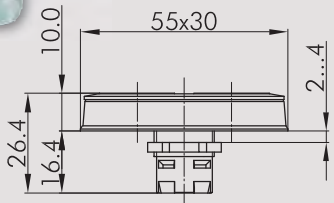


### Blank Nameplate

**BSRXU**



## Pushbutton Heads

Illustration	Dimensions	Description	Type
		<b>Sealing Cap</b> made of silicone rubber, down to -50°C	<b>TK26S</b>
		<b>Pushbutton Head with ring illumination</b> incl. lens suitable contact blocks <b>BUS ASI AZ B BF BZ BZ B439 CT CTF CTP CZ</b> push-cap silver-coloured front bezel silver-coloured push-cap black front bezel black	<b>RKTMLR</b>  <b>RKTSWLR</b>
		<b>Pushbutton Head with ring illumination and laser printing</b> incl. lens, standard imprints see nameplates on page 404 (please specify index no.), special inscription on request suitable contact blocks <b>BUS ASI AZ B BF BZ BZ B439 CT CTF CTP CZ</b> push-cap silver-coloured front bezel silver-coloured	<b>RKTMLRL...</b>
		<b>Membrane Pushbutton Head</b> incl. white non-transparent lens (inscription on request) suitable contact blocks <b>BUS AZ B BF BZ BZ B439 CT CTF CTP CZ</b> front bezel black	<b>RKTME</b>
		<b>Double Pushbutton with ring illumination for panel cut-out Ø 16 mm</b> locating pin to be on the right in case of horizontal installation laser printing on request suitable contact blocks <b>BZ BZ CT CZ</b> front bezel silver-coloured	<b>RRDTLR</b>
		<b>Double Pushbutton Head with ring illumination for cutouts 16 mm dia.</b> when mounted horizontally, the anti-rotation tab is on the right suitable contact blocks <b>BZ BZ CT CZ</b> push-cap red/green front bezel silver-coloured	<b>RRDTLRW_0003</b>

About Us

Control Units  
→ Actuators

Panel Mount Jacks

Bus Technology

Enclosures

Terminal Blocks

Pedal Switches

Limit Switches

Type Index



## Emergency Stops

About Us

Control Units

Actuators

Panel Mount Jacks

Bus Technology

Enclosures

Terminal Blocks

Pedal Switches

Limit Switches

Type Index

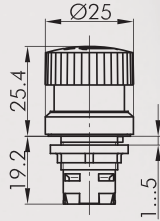
Illustration

Dimensions

Description

Type

IP65



### Emergency-stop Head

foolproof Yes  
switching position indicator No  
anti-lock collar No  
release twist right or left  
Standard EN 60947-5-1, EN 60947-5-5,  
EN ISO 13850



suitable contact blocks

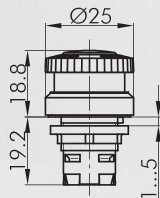
AZ BZ BZ PTP PTF

mushroom head red  
front bezel yellow



**RKUVGB**

IP65



### Emergency-stop Head

Other mushroom colours on request  
foolproof No  
switching position indicator No  
anti-lock collar No  
release twist right or left  
Standard EN 60947-5-1, EN 60947-5-5,  
EN ISO 13850



suitable contact blocks

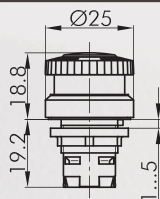
AZ BZ BZ PTP PTF

mushroom head red  
front bezel yellow



**RKVGB**

IP65



### Emergency-stop Head

incl. blank nameplate (inscription on request)  
foolproof No  
switching position indicator No  
anti-lock collar No  
release twist right or left

suitable contact blocks

AZ BZ BZ

mushroom head red  
front bezel yellow



**RKVLBGB**



### For further emergency stops, please refer to the chapter "Emergency-stop Heads" starting on page 366

The emergency-stop heads can also be supplied as latching mushroom heads with mushrooms in different colours.

**Mushroom Heads  
Knob Set for potentiometers**

About Us

Control Units

→ Actuators

Panel Mount Jacks

Bus Technology

Enclosures

Terminal Blocks

Pedal Switches

Limit Switches

Type Index

Illustration

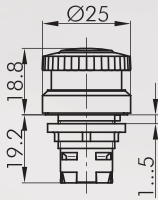
Dimensions

Description

Type

IP65

3 mm



**Mushroom Head, momentary**

Other mushroom colours on request  
switching position indicator No  
anti-lock collar No

suitable contact blocks

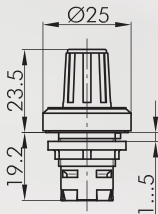
BUS AZ B BF BZ BZ B439 CT CTF CTP CZ

mushroom head	red	
front bezel	charcoal	
	silver-coloured	

**RKS**

**RKSM**

IP65



**Knob Set for potentiometers**

for potentiometers of 6 mm shaft dia. and thread M10x0.75.  
Delivery without potentiometer.  
Shaft length: approx. 32 mm

front bezel	charcoal	
	silver-coloured	

**RKR**

**RKRM**

## Selector Switches (momentary/maintained)

I = Switching position

> = Spring return

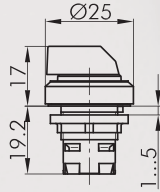
Illustration

Dimensions

Description

Type

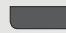

IP65



### Selector Head, maintained

suitable contact blocks

BUS ASI AZ B BF BZ BZ B439 CT CTF CTP CZ

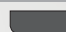

front bezel charcoal  silver-coloured 

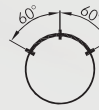


**RKWA**  
**RKWAM**

suitable contact blocks

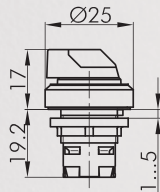
ASI AZ BZ BZ B439 CT CZ

front bezel charcoal  silver-coloured 



**RKWB**  
**RKWBM**

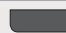

IP65



### Selector Head, momentary

suitable contact blocks

BUS ASI AZ B BF BZ BZ B439 CT CTF CTP CZ



front bezel charcoal  silver-coloured 



**RKSTA**  
**RKSTAM**

suitable contact blocks

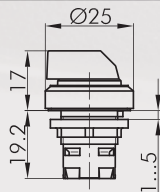
ASI AZ BZ BZ B439 CT CZ

front bezel charcoal  silver-coloured 



**RKSTB**  
**RKSTBM**

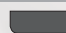

IP65



### Selector Head, left maintained, right momentary

suitable contact blocks

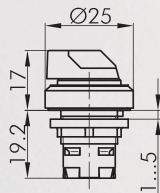
ASI AZ BZ BZ B439 CT CZ

front bezel charcoal  silver-coloured 



**RKWC**  
**RKWCM**

IP65

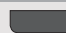
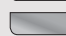


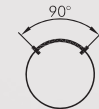
### Illuminated Selector Head, maintained

Knob available in blue-BL, yellow-GB, clear-KL, green-GN, red-RT (e.g. RKWAL\_GN)

suitable contact blocks

BUS ASI AZ B BF BZ BZ B439 CT CTF CTP CZ

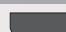

front bezel charcoal  silver-coloured 

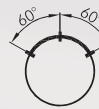


**RKWAL...**  
**RKWALM...**

suitable contact blocks

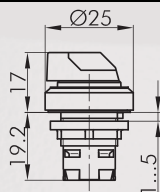
ASI AZ BZ BZ B439 CT CZ

front bezel charcoal  silver-coloured 



**RKWBL...**  
**RKWBLM...**

IP65

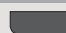



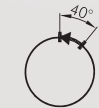
### Illuminated Selector Head, momentary

Knob available in blue-BL, yellow-GB, clear-KL, green-GN, red-RT (e.g. RKSTAL\_GN)

suitable contact blocks

BUS ASI AZ B BF BZ BZ B439 CT CTF CTP CZ

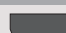

front bezel charcoal  silver-coloured 



**RKSTAL...**  
**RKSTALM...**

suitable contact blocks

ASI AZ BZ BZ B439 CT CZ

front bezel charcoal  silver-coloured 



**RKSTBL...**  
**RKSTBLM...**



**Selector Switches (momentary/maintained)  
Toggle Heads**

I = Switching position  
> = Spring return

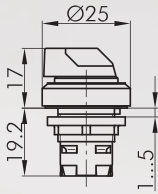
Illustration

Dimensions

Description

Type

IP65  
☀



**Illuminated Selector Head, left maintained, right momentary**

Knob available in blue-BL, yellow-GB, clear-KL, green-GN, red-RT (e.g. RKWCL\_GN)

suitable contact blocks

ASI AZ BZ BZ B439 CT CZ

front bezel

charcoal

silver-coloured



RKWCL...

RKWCLM...

IP65



**Selector Head for desert application, maintained**

tested with coarse Arizona dust

suitable contact blocks

BUS ASI AZ B BF BZ BZ B439 CT CTF CTP CZ

knob colour

black

front bezel

black



RKWA\_514

suitable contact blocks

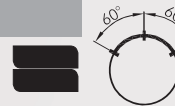
ASI AZ BZ BZ CT CZ

knob colour

black

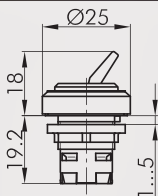
front bezel

black



RKWB\_514

IP65



**Toggle Head**

red toggle (other colours on request)

suitable contact blocks

BUS AZ B BF BZ BZ B439 CT CTF CTP CZ

front bezel

charcoal

silver-coloured

RKK\_RT

RKKM\_RT

## Key Switches (momentary/maintained)

- I = Switching position
- > = Spring return
- = Key removable position

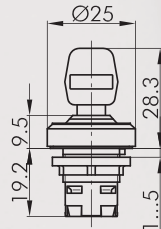
Illustration

Dimensions

Description

Type

IP65

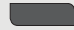



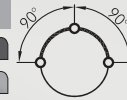
### Key Actuator, maintained

including two keys  
other lock types on request

suitable contact blocks

ASI AZ BZ BZ B439 CT CZ

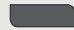
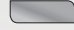
front bezel charcoal  silver-coloured 

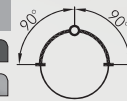


**RKSSA12**  
**RKSSMA12**

suitable contact blocks

ASI AZ BZ BZ B439 CT CZ

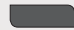
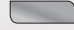
front bezel charcoal  silver-coloured 

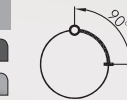


**RKSSA13**  
**RKSSMA13**

suitable contact blocks

ASI AZ B BF BZ BZ B439 CT CTF CTP CZ

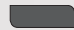

front bezel charcoal  silver-coloured 

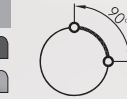


**RKSSA14**  
**RKSSMA14**

suitable contact blocks

ASI AZ B BF BZ BZ B439 CT CTF CTP CZ

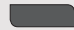
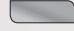
front bezel charcoal  silver-coloured 

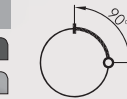


**RKSSA15**  
**RKSSMA15**

suitable contact blocks

ASI AZ B BF BZ BZ B439 CT CTF CTP CZ


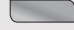
front bezel charcoal  silver-coloured 



**RKSSA16**  
**RKSSMA16**

suitable contact blocks

ASI AZ B BF BZ BZ B439 CT CTF CTP CZ

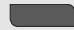
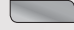
front bezel charcoal  silver-coloured 



**RKSSA17**  
**RKSSMA17**

suitable contact blocks

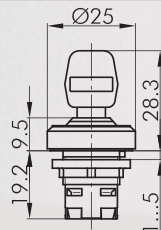
ASI AZ B BF BZ BZ B439 CT CTF CTP CZ

front bezel charcoal  silver-coloured 



**RKSSA18**  
**RKSSMA18**

IP65

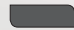
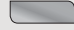


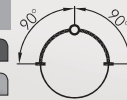
### Key Actuator, maintained

requires 3 keys:  
1st key: two-way operation  
2nd key: operation to the left only  
3rd key: operation to the right only

suitable contact blocks

ASI AZ BZ BZ B439 CT CZ

front bezel charcoal  silver-coloured 



**RKSSA31**  
**RKSSMA31**

About Us

Control Units  
Actuators

Panel Mount Jacks

Bus Technology

Enclosures

Terminal Blocks


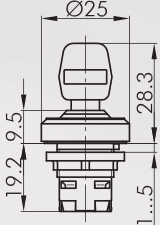


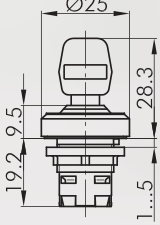


Pedal Switches

Limit Switches

Type Index

## Key Switches (momentary/maintained)

- I = Switching position
- > = Spring return
- = Key removable position

Illustration	Dimensions	Description	Type
		<b>Key Actuator, momentary</b> including two keys other lock types on request suitable contact blocks ASI AZ BZ BZ B439 CT CZ	
		front bezel charcoal silver-coloured	 <b>RKSSA23</b> <b>RKSSMA23</b>
		<b>Key Actuator, left maintained, right momentary</b> suitable contact blocks ASI AZ B BF BZ BZ B439 CT CZ	
		front bezel charcoal silver-coloured	 <b>RKSSA28</b> <b>RKSSMA28</b>
		<b>Standard Spare Keys</b> standard spare key, specify key number for special locks	<b>ESMIC482</b>

About Us

Control Units  
→ Actuators

Panel Mount Jacks

Bus Technology

Enclosures

Terminal Blocks

Pedal Switches

Limit Switches

Type Index



## Buzzers

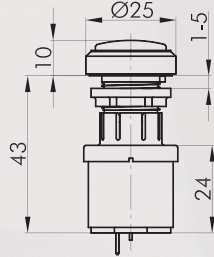
Illustration

Dimensions

Description

Type

IP65



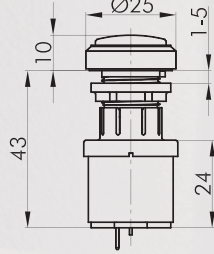
### Buzzer

operating voltage: 12 ... 24V AC/DC  
 operating current: max. 30mA  
 signal frequency: 3.5 +/- 0.5 Hz  
 volume: max. 90 db (10cm, 24V)  
 max. 80 db (10cm, 12V)  
 operating temperature: -20°C ... 60°C  
 front bezel charcoal  
 silver-coloured



**RKNSG+SG-24V**  
**RKNMSG+SG-24V**

IP65



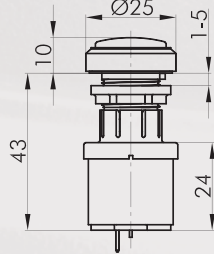
### Interval Buzzer

operating voltage: 12 ... 24V AC/DC  
 operating current: max. 30mA  
 signal frequency: 3.5 +/- 0.5 Hz  
 volume: max. 90 db (10cm, 24V)  
 max. 80 db (10cm, 12V)  
 interval: 1 s  
 operating temperature: -20°C ... 60°C  
 front bezel charcoal  
 silver-coloured



**RKNSG+SGL-24V**  
**RKNMSG+SGL-24V**

IP65



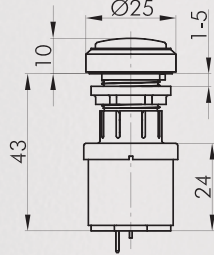
### Illuminated Buzzer

operating voltage: 12 ... 24V AC/DC  
 operating current: approx. 30mA  
 signal frequency: 3.5 +/- 0.5 Hz  
 volume: max. 90 db (10cm, 24V)  
 max. 80 db (10cm, 12V)  
 operating temperature: -20°C ... 60°C  
 front bezel charcoal  
 silver-coloured



**RKNSGL+SGLR-24V**  
**RKNMSGL+SGLR-24V**

IP65



### Illuminated Interval Buzzer

operating voltage: 12 ... 24V AC/DC  
 operating current: approx. 30mA  
 signal frequency: 3.5 +/- 0.5 Hz  
 volume: max. 90 db (10cm, 24V)  
 max. 80 db (10cm, 12V)  
 interval: 1 s  
 operating temperature: -20°C ... 60°C  
 front bezel charcoal  
 silver-coloured



**RKNSGL+SGLR-24V**  
**RKNMSGL+SGLR-24V**



### Faston Clamp 2.8 x 0.8 mm with snap-in pin

**FH2,8**

Cross section 0.75 - 1.50 mm<sup>2</sup>, tin-plated brass, with pin to snapfit into the sockets XA, XAL and the insulating case IH2.8




### Insulating Case

**IH2,8**

for Faston clamp FH2,8, slip on from the front

## Accessories for Contact blocks

Illustration	Dimensions	Description	Type
		<b>Double Faston</b> for the connection of 2 Faston clamps FH2.8	<b>FD2,8</b>

About Us

Control Units

→ Actuators

Panel Mount Jacks

Bus Technology

Enclosures

Terminal Blocks

Pedal Switches

Limit Switches

Type Index

## Pilot Lights

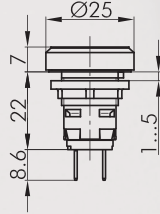
Lenses and nameplates to be ordered separately

Illustration

Dimensions

Description

Type



### Pilot Light with Faston terminals 2.8x0.8 mm

W2x4.6d socket

front bezel

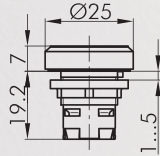
charcoal

silver-coloured



**RKL4**

**RKL4M**



### Pilot Light Head

suitable lampholders

ASI B BF CT CTF CTP CZ

front bezel

charcoal

silver-coloured

yellow

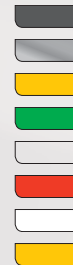
green

clear

red

opalwhite

yellow



**RKN**

**RKNM**

**KH20GB**

**KH20GN**

**KH20KL**

**KH20RT**

**KH20WS**

**T20FGB**



### Flat Lens, transparent

colour

blue

green

clear

red

opalwhite



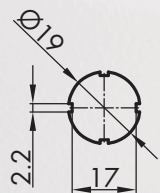
**T20FBL**

**T20FGN**

**T20FKL**

**T20FRT**

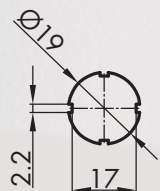
**T20FWS**



### Nameplate with standard imprint

Please specify index number (see nameplates on pages 404)

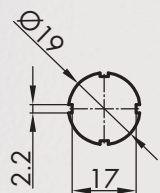
**BSRX...**



### Nameplate with special imprint

according to customer's specification

**BSRXB**




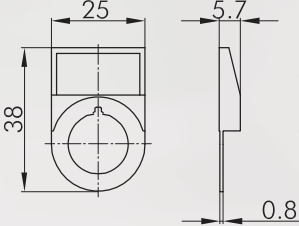









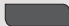


### Blank Nameplate

**BSRXU**



## Accessories for Actuators

Illustration	Dimensions	Description	Type
		<b>Hexagonal Mounting Tool</b> with torque limitation, for the series OKTRON, OKTRON-JUWEL, OKTRON-R, RONTRON-R-JUWEL, RONTRON-Q-JUWEL, QUARTRON, QUARTRON-JUWEL, RX-JUWEL	<b>S16</b>
		<b>Mounting Tool Adapter with 1/4" connections</b> for mounting tools S16 and S22	<b>SRA</b>
		<b>External Nameplate Holder</b> for outside marking of the actuators of the OKTRON-R series, accepts self-adhesive nameplates  colour charcoal 	<b>RKABT</b>
		<b>Self-adhesive Nameplate laser-printed</b> Inscription according to customer's specification Dimensions: 22 x 11 mm	<b>BZ16L</b>
		<b>Self-adhesive Nameplate blank</b> Dimensions: 22 x 11 mm	<b>BZ16U</b>
		<b>Self-adhesive Nameplate with standard imprint</b> Please specify index no. (see nameplates on page 404) Dimensions: 22 x 11 mm	<b>BZ16B...</b>
		<b>Yellow Nameplate</b> self-adhesive PVC foil printing on request outer dia. 60 mm for mounting dia. 16 mm colour yellow 	<b>NAS_16</b>
		<b>Yellow Nameplate with quadrilingual imprint</b> self-adhesive PVC foil outer dia. 60 mm for mounting dia. 16 mm colour yellow 	<b>NAS_16_548</b>
		<b>Universal Lens Remover</b>	<b>USK</b>
		<b>Round Dummy</b> to close unused mounting apertures colour charcoal 	<b>RX16</b>